

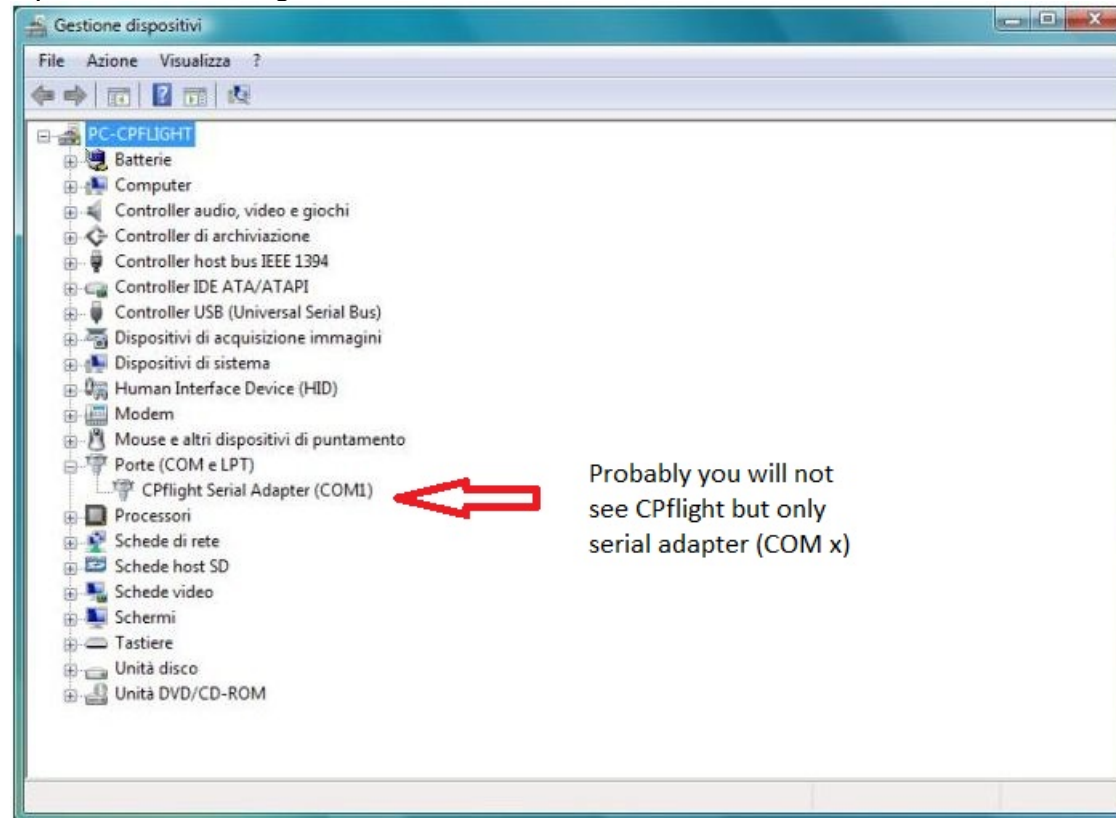
FCU320FULL/CAP FIRST SETUP

The package include the FCU320, EF1320 CP side, EF1320 FO side and the USB cable (1,8mt).
The power come directly from the computer usb port so no need external power supply.



USB driver installation

Connect the FCU320 to the computer USB port. When you connect the FCU320 to the usb port of your computer the operative system (OS) start to automatically search the right usb driver. Usually on PC with installed windows7 or later version the OS, after few second find and install the usb driver. If you open the device manager window you will find a Port (COM & LPT) field with a com port number (see the picture below). In this example the com port number is COM1. This value is assigned randomly, so on your system you could see also an other com port number (Eg. COM3, COM4). Please remember this number because is the number that you have to assign the first time (and only the first time) that you will run the Cpflight driver or the Cpflight test utility. Note that if you connect the MCP to an other usb port this com port number will change, so you will browse again into your device manager to see the new com port number assigned



Occasionally due to some antivirus or firewall blocking this installation could fail, in this case you can download the usb driver from the cpflight web site and install the driver manually (see next page).

Force the usb driver

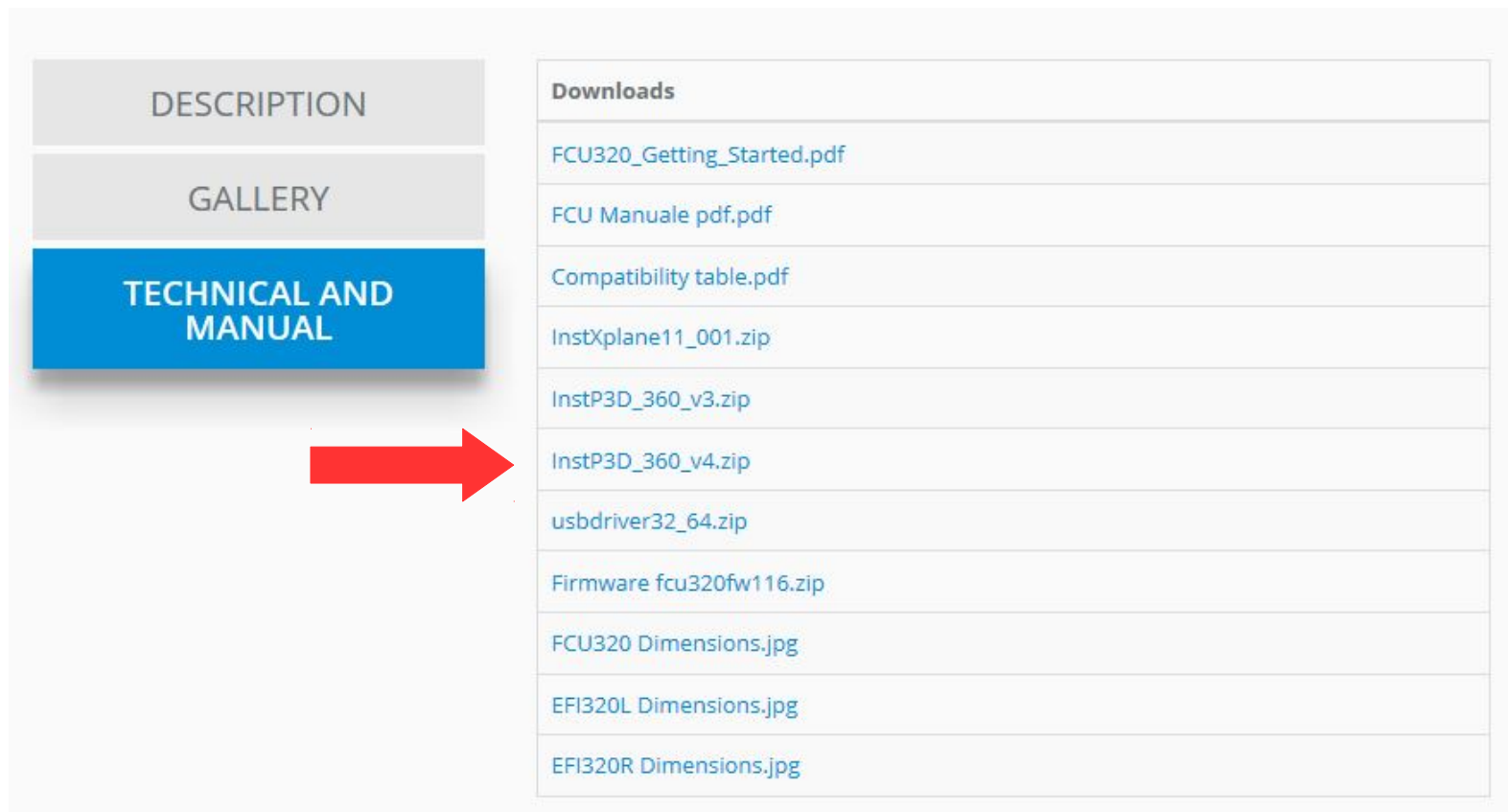
If during the driver installation the firewall, antivirus or some other protection lock the driver installation, don't worry you can install this driver manually. From the section Technical and manule of this page <https://www.cpfliight.com/en/fcu320full-prod-34.php> you can download this zip file (usbdriver32_64.zip) . Once downloaded unzip the file into a **temporarily folder** (Eg. you can name this folder "CPfligh USB driver") and open the device manager window. You will find a warning (yellow interrogative point) that will inform you that a device is not yet correctly installed and are waiting the correct driver. Open the device properties window, select upgrade driver and select "search the driver on this computer". Browse on the **temporarily folder** (Eg. "Cpfligh USB driver" created before), then select OK.

The image shows a sequence of steps in Windows Device Manager to manually install a driver. It starts with the 'Proprietà - USB Serial Port (COM3)' window, where the 'Driver' tab is selected. The 'Aggiorna driver' button is highlighted. This leads to the 'Aggiorna driver - USB Serial Port (COM3)' dialog box, where the search location is set to 'C:\CPflight USB Driver'. The 'Cerca il software del driver nel computer' option is selected in the 'Come vuoi eseguire la ricerca dei driver?' dialog box. Finally, the 'Avanti' button is clicked in the 'Cerca driver nel computer' dialog box.

After few second the device will be loaded and the COM & LPT with a com port number will appear into device manger window.

Download the communication driver for FSX or P3D

From CPflight web site download the communication driver. Take care to select the right version because have to match with the simulator version installed on your computer. In this example was the version for P3D V4. **The Cpflight driver MUST be always installed on your PC (also if you flight with other add-on like ProsimA320 or Project Magenta) because include important tools used to test the hardware.** The installation will create a CPflight folder. Pay attention to create this folder under the simulator folder (Eg: C:\Lockheed Martin\Prepar3D v4\CPflight)



The screenshot shows a navigation menu on the left with three buttons: 'DESCRIPTION', 'GALLERY', and 'TECHNICAL AND MANUAL'. The 'TECHNICAL AND MANUAL' button is highlighted in blue. A red arrow points from this button to a 'Downloads' table on the right. The table lists various files for download, including manuals, compatibility tables, and installation packages for different simulator versions.

Downloads
FCU320_Getting_Started.pdf
FCU Manuale pdf.pdf
Compatibility table.pdf
InstXplane11_001.zip
InstP3D_360_v3.zip
InstP3D_360_v4.zip
usbdriver32_64.zip
Firmware fcu320fw116.zip
FCU320 Dimensions.jpg
EF1320L Dimensions.jpg
EF1320R Dimensions.jpg

Run the FCUTEST App

Now you are finally ready to test your FCU. To verify that all is correct run the app testfcu.exe available into cpflight folder.

The first time you have to set the right com port number (remember the COM port number that you have seen into device manager window), select ok to assign this com port number and the FCU will start. After few second you will be able to check all the FCU320 and both EFI320 functionality





FOR PROJECT MAGENTA USERS

To enable communication with Project Magenta and the Cpflight FCU and EFIS open “fcu.ini” file located into PM FCU folder using a text editor.

Into fcu.ini file search the key CpflightComm. As default the CPFlightComm is set to 0.

Please insert the right com port number (refer to the device manager window) . In this example the communication port number is 3.

CpflightComm = 3.

Save and close the fcu.ini file.

To start the FCU320 you need only to run Project Magenta FCU software.

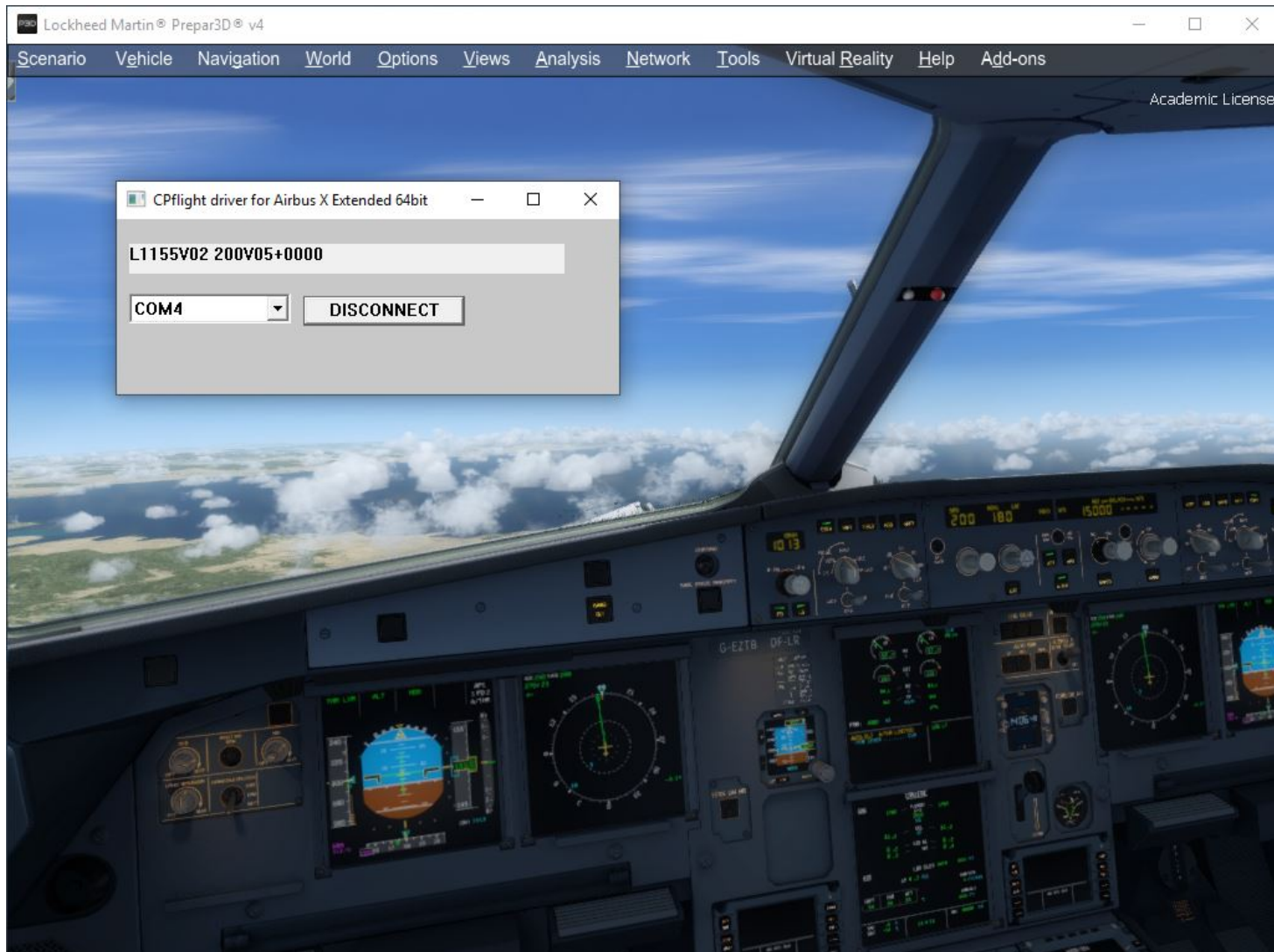


To enable communication with ProSim:A320 and the Cpfight FCU open Prosim configuration window and into CPFlight hardware box select the communication port number. (Refer to the device manager window) .

Run Prosim FCU to start the the Cpfight FCU320.

AEROSOFT AIRBUS A320 A321 FOR P3D V4 64 bit

To use the Cpflight A320 with Aerosoft Airbus X please download from this page <https://www.cpflight.com/en/fcu320full-prod-34.php> the driver InstP3D_362.zip or later version. Extract and install the file included into the zip under P3D folder of your Computer





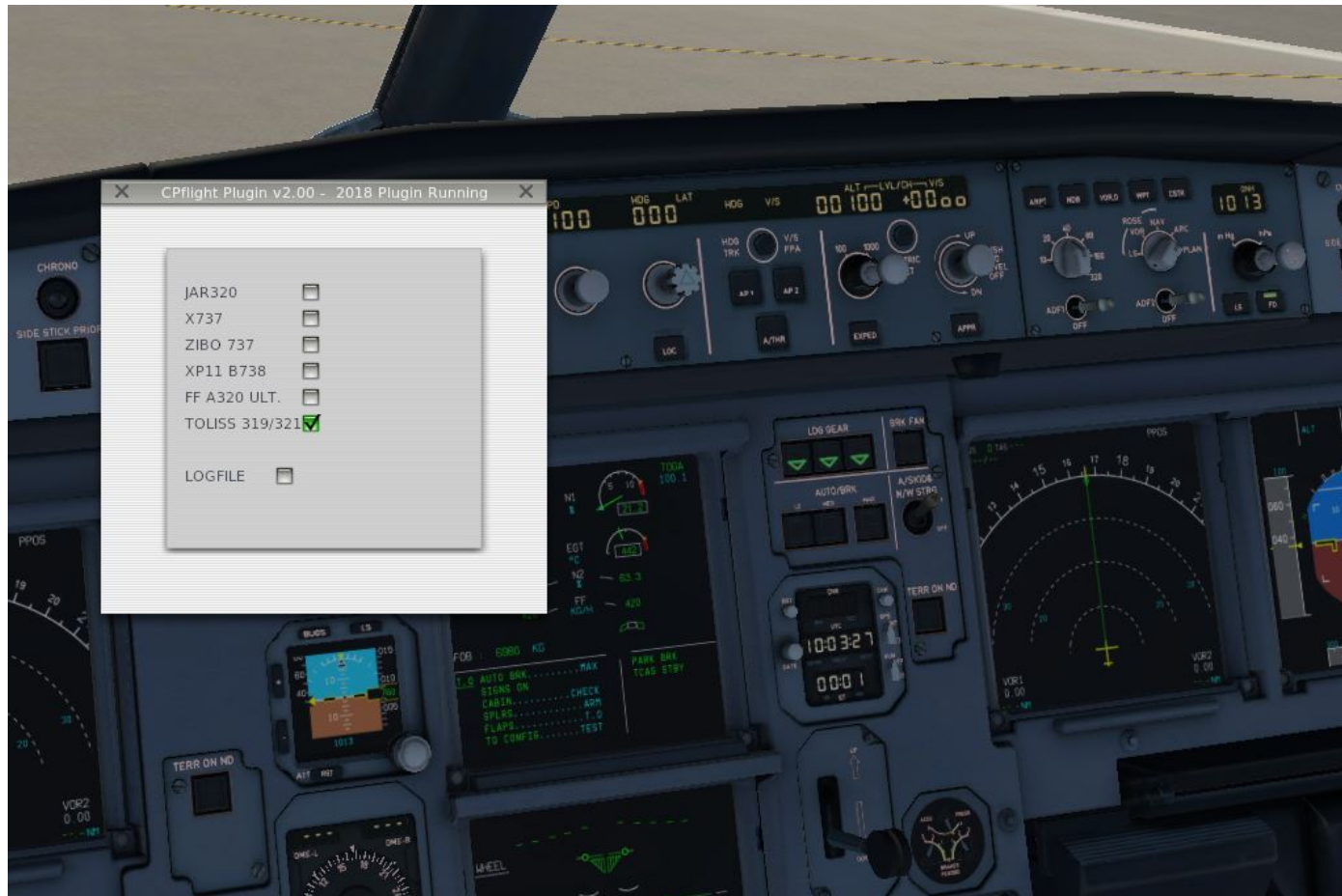
Please open the file dll.xml and add the follow line (only the one in red). Save and close the file. Run P3D and load an Aerosoft Airbus A320 flight. From the window that appear select the right com port and select CONNECT Button

```
<SimBase.Document Type="Launch" version="1,0">
  <Descr>Launch</Descr>
  <Filename>dll.xml</Filename>
  <Disabled>False</Disabled>
  <Launch.ManualLoad>False</Launch.ManualLoad>
  <Launch.Addon>
    <Name>FSUIPC 5</Name>
    <Disabled>False</Disabled>
    <Path>C:\Program Files\Lockheed Martin\Prepar3D v4\Modules\FSUIPC5.dll </Path>
  </Launch.Addon>

  <Launch.Addon>
    <Name>CPF_Menu FSX</Name>
    <Disabled>False</Disabled>
    <Path>CPflight\CPF_DLL_FSX.dll</Path>
  </Launch.Addon>

  <Launch.Addon>
    <Name>CPflight Aerosoft Driver</Name>
    <Disabled>False</Disabled>
    <ManualLoad>False</ManualLoad>
    <Path>CPflight\CPF_Aerosoft_A32064X.dll</Path>
    <DllStartName>module_init</DllStartName>
    <DllStopName>module_deinit</DllStopName>
  </Launch.Addon>

</SimBase.Document>
```



Download and install from CPflight web site the file InstXPlane11_xxx.zip and extract the installer. Run and follow the instructions into the installer windows.

Please be sure to install the driver under XP11 plugin folder of your PC else the plugin will not be activated by XP11. So use the browse button of the installer to modify the folder if different by the default folder of the installer.

Once installed the driver load XP11; into Plugin Menu you will be now able to see the CPflight Menu. Select this option menu and Cplight plugin window will be showed.

Read the Plugin title bar to check the state of the Plugin. If all is ok and the UDP port has been opened without any problem on the title bar you will read **“Plugin Running”**, else **“Plugin Not Active”**. Is possible that the first time that you run XPLANE after the installation of the plugin the firewall will ask you the permission to open the communication channel, please accept and confirm. Flag the kind of plane that you want to use, than close the plugin window.

This operations will be necessary only the first time, after that you no need anymore to open this plugin window because the plugin will run automatically when you will active the XP11. The only case to open again this window is only if you want to change kind of aircraft.

Next window is the driver that allow you the communication between the hardware and XP11. Be sure that the the XPLANE flag has been selected (see yellow circle), if not select the XPLANE flag.



Please verify the right communication port number into the driver window (must be the same used to test the hardware with the test utility, like showed at the begin of thuis manual).

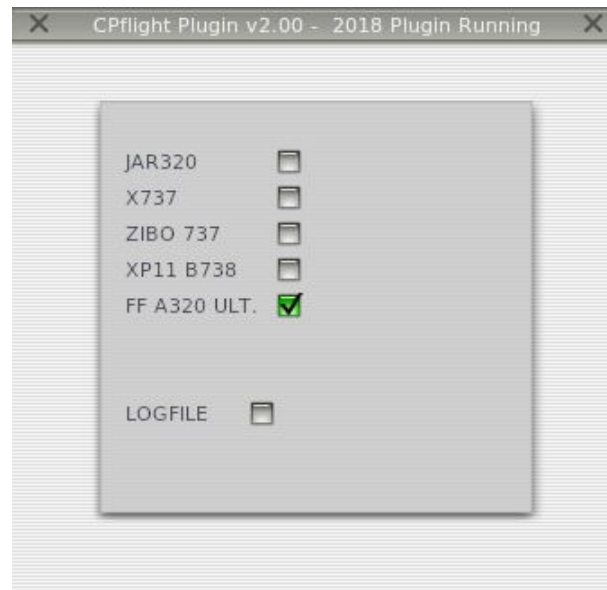
Once verified the connection you can finally select the connect menu (see red arrow) to activate the FCU. The FCU will start and will synchronize the data with the value that you read on the screen and the driver window will automatically reduced.

After few seconds (necessary to the FCU for its start-up) you will be able to flight using the FCU and the connected modules. To stop the hardware open again the driver window from the application bar and select the disconnect menu (green arrow). The FCU will switched off.

Configure to use with FlightFactor A320 Ultimate

Is very important read carefully this section to allow the FCU to communicate with FFA320 Ultimate.

To use the Cpflight FCU and EFIS (both) with Flight Factor A320 Ultimate you need to set the flag FFA320Ult into Cpflight plugin window.



To have all the functionality you need also to install on your XP11 system the FFA320Connector plugin. Please download the Version 1.1.6 (or later version) from this web page <https://github.com/Luuk3333/FFA320Connector/releases>.

Once downloaded please extract and put the FFA320Connector folder under
.....FlightFactorA320ultimate\plugins\.....

eg: C:\X-Plane 11\Aircraft\FlightFactor A320 ultimate\plugins\FFA320Connector.

For last copy the file custom.cfg from Cpflight folder into FFA320Connector folder (the same folder where there are already present the files config.cfg and objectlist.txt.
From Cpfligh folder run now the fs_com driver, select Connect menu and the Cpflight FCU320 will start and will interface to flight with FlighFactor A320 Ultimate.

