

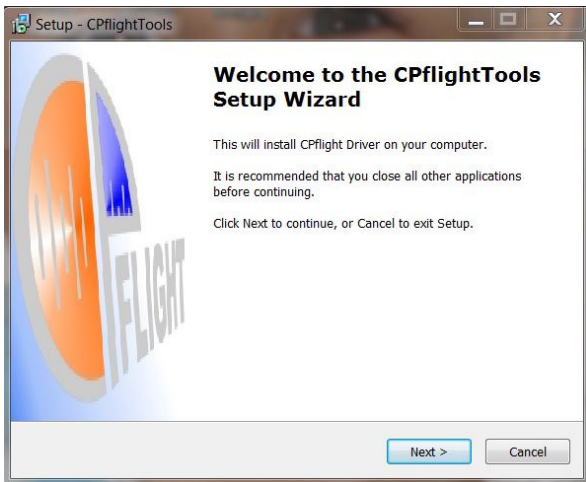
Aerowinx 747

Aerowinx 747 Communication driver installation

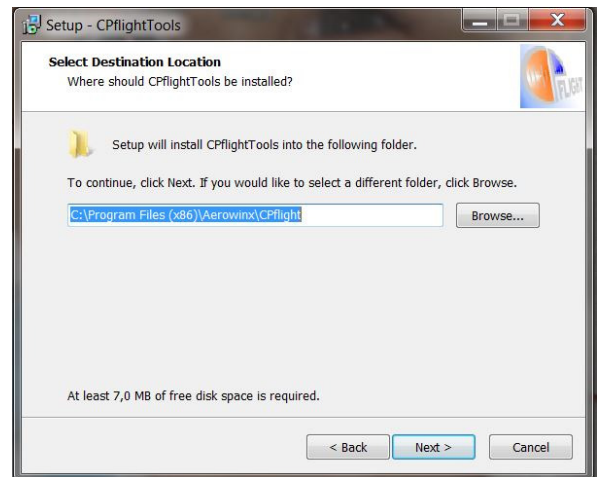
Is now available a new driver to interface Aerowinx 747 with CPflight hardware.

Please to install the driver follow this procedure:

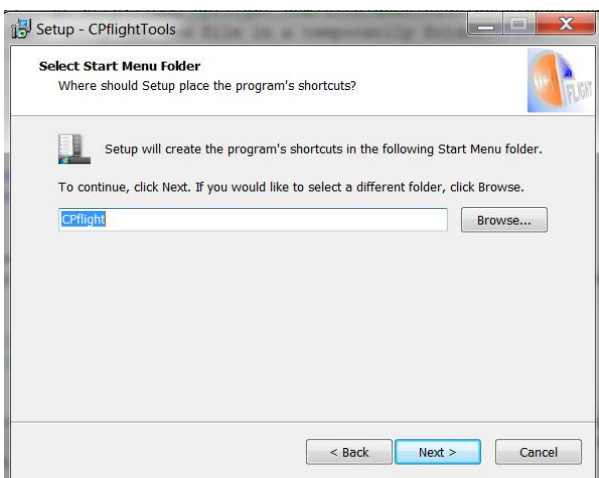
- Download the file "Instpsx_XXX.zip"
- The file is compressed into .zip archive; please unzip the exe file in a temporarily folder.
- Click on Instpsx_XX.exe to start the installation program. Follow the installation steps and at the end click on finish button.



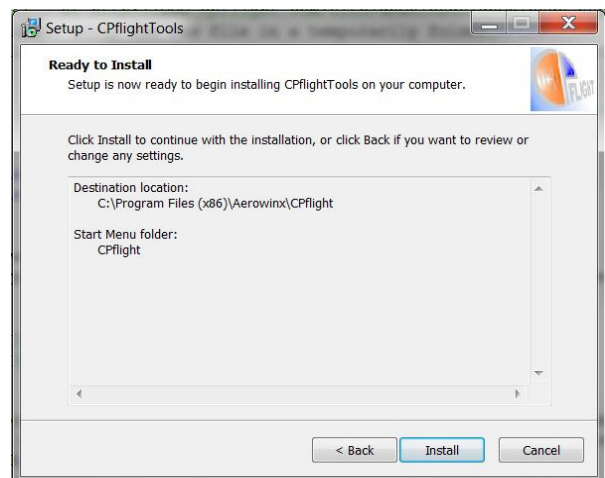
The first window is the welcome window, please click (browse button) else click Next > to proceed



The second window allow you to select the installation folder Next > to proceed



In the third window you can change the shortcut name of start menu folder, click Next > to proceed



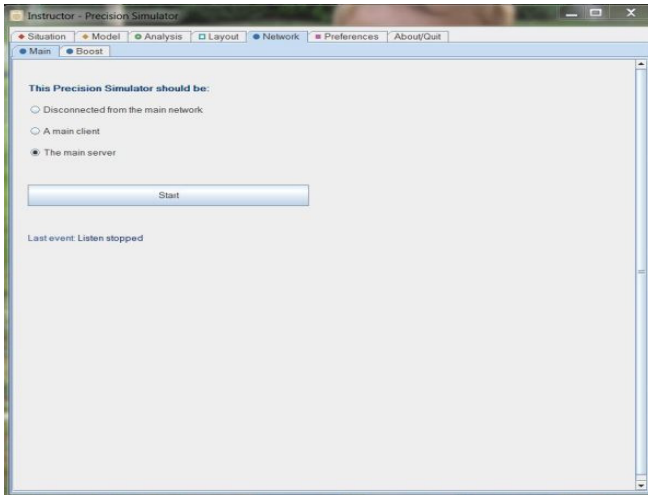
Fourth window give you a report about your installation setup. Click to install to start the installation and after click on finish to terminate the installation procedure.

COMPATIBILITY



With this driver you can use the CPflight MCP (all version), the efis (CP and FO) with Aerowinx 747.

Aerowinx 747 network



Aerowinx 747 exchange data with the hardware using a TCP protocol. To enable this communication before run the CPflight communication driver you have to select the network tab and select "the main server" checkbox then click on START button of this tab.

Driver WINDOW



The first time that you run this program you need to select the virtual com port where the MCP is connected. If you do not know the virtual com number please check your system. On your PC select Control panel -> System -> Device Manager Tab. On the (COM & LPT) port you will see "CPflight serial adapter (COM n)" where "n" is the assigned communication port number, you will use this number in to select the right com number. In the future you no need to repeat this operation because this data is saved in memory.

To activate the driver you need only to run the program `fs_com_psx_747.exe` that you can find into `cpflight` folder. `Fs_com_psx_747` dialog have a pushbutton `CONNECT/DISCONNECT`. After the activation of the main server on network `PSX` tab, clicking on `CONNECT` button you can start the communication with the hardware. When the communication is enabled the `CONNECT` button change in `DISCONNECT` button. Clicking on `DISCONNECT` you can stop the communication and switch-off the hardware.